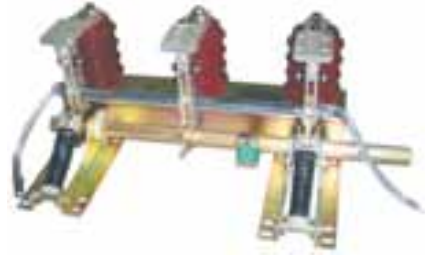


JN15-12/24(40.5) Indoor AC High Voltage Earthing Switch

Summary

JN15-12 indoor HV earthing switch absorbs advanced new technics from domestic and abroad. It conforms to GB1985 AC HV disconnector switch and earth switch, relative standards IEC62271-102 and passes KEMA test. The apparatus applies to power system of rating below 12/24/40.5kV, and AC 50/60Hz. It is suitable for various types HV switchgear for earthing protection. The holistic earthing switch consists of basis, supporting insulator, main axis, main blade, fast spring, fixed and moving contact. Additional electronic display is also available according to the user's requirement.



Ambient condition

1. Altitude: $\leq 1000\text{m}$;
2. Ambient temperature: $-25^{\circ}\text{C}\sim+40^{\circ}\text{C}$;
3. Relative humidity: daily average $\leq 95\%$, monthly average $\leq 90\%$;
4. Earthquake intensity: ≤ 8 degree.

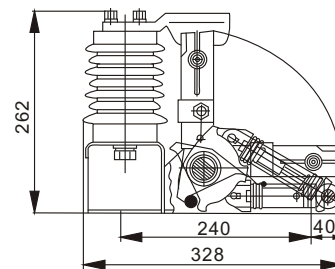
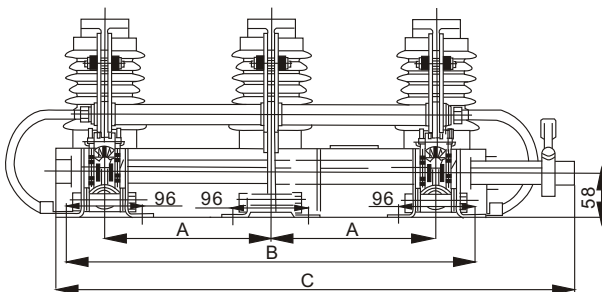
Product feature

1. Advanced design and steady performance.
2. Simple structures, simple mounting and adjustment.
3. Quick breaking and making capability.
4. Handsome appearance and delicate manufacture technics.
5. Usable and scientific, available operation on both two sides(right and left).

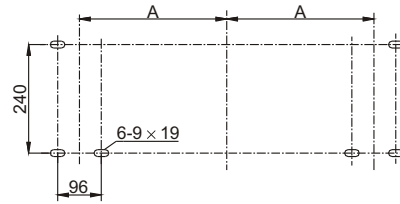
Technical specification

Item		Unit	Data		
Rated voltage		kV	12	24	40.5
Rated short-time withstand current		kA	31.5, 40, 50	31.5, 40, 50	31.5
Rated short-circuit duration		s	4	4	4
Rated short-circuit making current		kA	80, 100, 125	80, 100, 125	80
Rated peak withstand current		kA	80, 100, 125	80, 100, 125	80
Central distance between poles		mm	150, 165, 210, 230, 250, 275	210, 230, 250, 275	350, 385, 460
Rated insulating level	1min. PF withstand voltage	kV	42/49	50/60	95
	Lightning impulse withstand voltage		75/85	125/145	185

Outline dimension

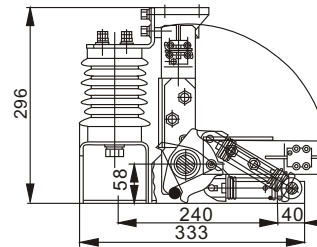
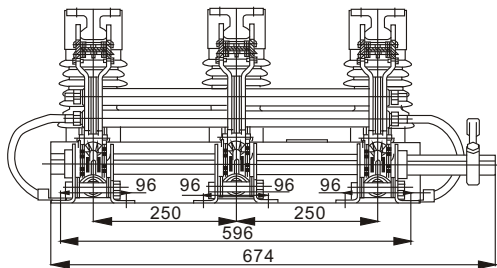


Model	A	B	C
JN15-12/31.5-150	150	396	535
JN15-12/31.5-165	165	426	565
JN15-12/31.5-210	210	516	655
JN15-12/31.5-230	230	556	710
JN15-12/31.5-250	250	596	760
JN15-12/31.5-275	275	646	810



Mounting hole

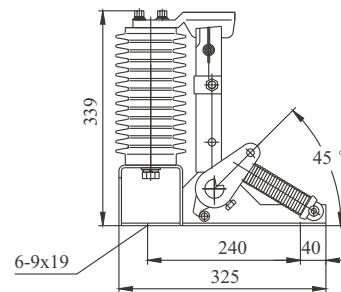
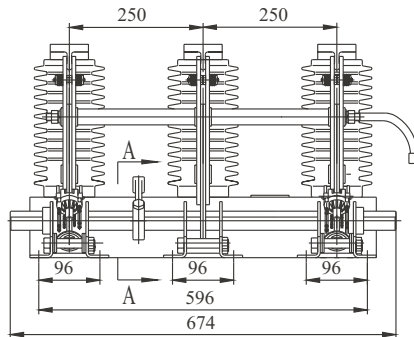
JN15-12/31.5 Earthing switch



A-A

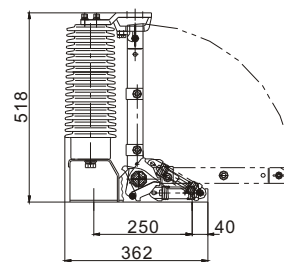
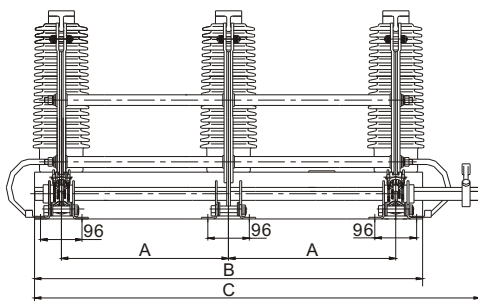
Model	A	B	C
JN15-12/40-210	210	516	655
JN15-12/40-230	230	556	710
JN15-12/40-250	250	596	760
JN15-12/40-275	275	646	810

JN15-12/40 Earthing switch

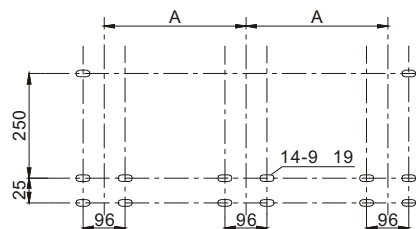


A-A

JN15-24/40 Earthing switch



Model	A	B	C
JN15-40.5/31.5-300	300	724	855
JN15-40.5/31.5-350	350	824	955
JN15-40.5/31.5-385	385	894	1025
JN15-40.5/31.5-460	460	1044	1175



Mounting hole

JN15-40.5/31.5 Earthing switch