

YZW15(DW15) UNIVERSAL AIR CIRCUIT BREAKER



APPLICATION

YZW15(DW15) series universal auto air circuit breakers (herein after referred to as the breakers) are suitably used in AC 50/60Hz, rated current up to 4000A and rated working voltage up to 1140V (using frame level rated current 630A and below) and 380V (using frame level rated current 1000A and over) power distributing systems for power distribution and protection of power supply circuit and power apparatus from overload, under voltage and short circuit.

The breakers with frame level rated current 630A and below can also be used in AC 50/60Hz 380V system for protection of motors from overload under voltage and short circuit.

Under normal conditions, the breaker can also be used for unfrequent making and breaking operations in circuit and the breakers with frame level rated current 630A and below can be used for unfrequent starting for a designated motor.

SPECIFICATION

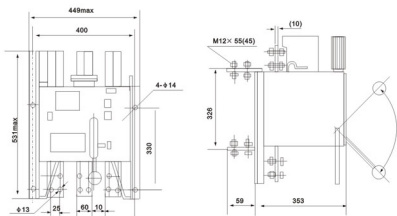
Type of Breaker		DW15-200	DW15-400	DW15-630	DW15-1600	DW15-2500	DW15-4000
Frame level rated current I_{nm} (A):		200	400	630	1000 1600	2500	4000
Pole NO.(P):		3	3	3	3	3	3
Rated current I_n (A)	Thermal	100,160	315	315,400	630 800	1600 2000	2500 3000
	Electromagnetic Trip	200	400	630	1000 1600	2500	400
	Electronic trip	100	200	315,400	630 800	1600 2000	2500 3000
		200	400	630	1000 1600	2500	4000
Rated breaking capacity	Breaking AC380V	20	25	30	40	60	80
	Breaking AC660V	10	15	20	-	-	-
short circuit(RMS) (KA)	Breaking AC1140V	-	10	12	-	-	-
	Instantaneous delay	5	8	12.6	30	40	60
IEC947-2	AC380V						
	Instantaneous delay AC660V	5	8	10	-	-	-
Mechanical endurance(time)		20000	10000	10000	5000	5000	4000
Electrical endurance(11N,1Ue)(time)		2000	1000	1000	500	500	500
AC 380 Electrical endurance of motor		4000	2000	2000	-	-	-
AC-3							
Overload operating performance (I_n-630A 6In 1.05Ue max)(time)		25	25	25	25	-	-
Instantaneous full breaking time(ms)		30	30	30	40	40	40
Operated frequency(time/hour)		120	60	60	30	20	10
Flashover distance(mm)		250	25	250	250	350	400
Operated force arm(mm)		90	90	90	250	-	-
Operated force(N)		200	200	200	350	-	-

OUTLINE & MOUNTING DIMENSION

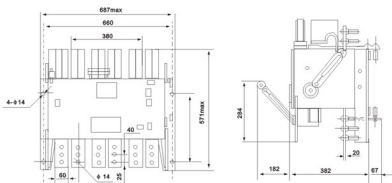
DW15-200 400 630		Rear operation	Front operation	Drawer operation
Outline dimension (mm)	L	338	336	538
	W	240	240	330
	H	418	465	483
Mounting dimension (mm)	X	220	220	220
	Y	300	300	324.5
	φ	11	11	9.5×20

Model		DW15-1000~1600	DW15-2500	DW15-4000
Outline dimension (mm)	L	355	382	382
	W	441	687	897
	H	531	571	571
Mounting dimension (mm)	X	400	660	870
	Y	330	330	330
	φ	14	330	14

OUTLINE AND INSTALLATION SIZE



YZW15-1000.1600



YZW15-2500